




SHREE MURLIDHAR

LIFESCIENCE

Company Profile



About Us!

- 
- ❖ *Shree Murlidhar Life science is one of the leading reputed and reliable manufacturers and suppliers of nutraceutical products.*
 - ❖ *Our team of technical professionals strives for continuous innovations with maintaining the highest standards of the products with an aim to deliver best quality and highly effective products, from the widest range at the most affordable prices.*
 - ❖ *We manufacturer all kinds of Nutraceutical Medicines like vitamins, minerals, health supplements, protein powders and manufacturer energy powders, dehydration powders, green tea, food supplements, omega-3 fatty acids, alpha lipoic acid, antioxidants, fibres, prebiotics and probiotics, garcinia and cambogia, and raspberry ketones.*
 - ❖ *Our Manufacturing Unit is provided with Suitable Ventilation System and all our Raw Material (RM), Packaging Material (PM) and Finished Products are kept in proper controlled temperature conditions.*
 - ❖ *SM Life Science also provides third-party, contract and loan license manufacturing with larger capacity for different types of dosage forms and technology and expertise to produce special formulations.*

Our Advantage



Spacious & Owned Infrastructure



Experts In Nutraceuticals



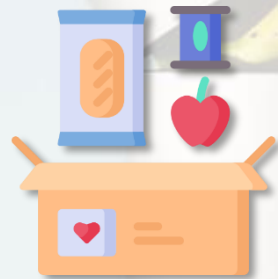
Located in Maharashtra's Pharma Hub



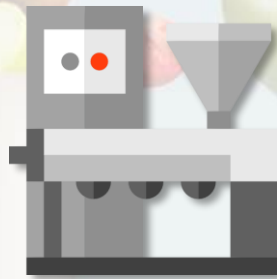
Certified and Qualified Professionals



Certified By All Regulators



Dedicated Area for Raw & Packaging Material



Hi-Tech Machinery for Cost-Effective Production



Stringent Quality Control

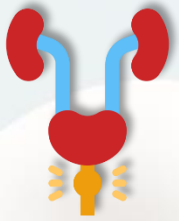


In-house Quality Analysis



PAN India PCD Franchise

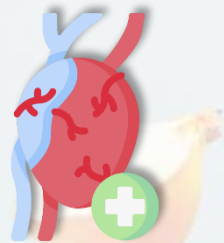
Our Product Categories



ANDROLOGY



ANTI-ANEMIC



CARDIOLOGY



DERMATOLOGY



ANTI-DIABETIC



ANTI-DIARRHEAL



DIGESTIVE
SUPPLEMENTS



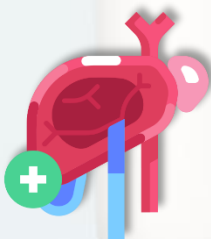
EYE HEALTH



GYNAECOLOGY



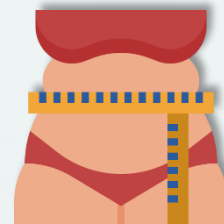
HEALTH
SUPPLEMENTS



HEPATOLOGY



NEUROLOGY



ANTI-OBESITY

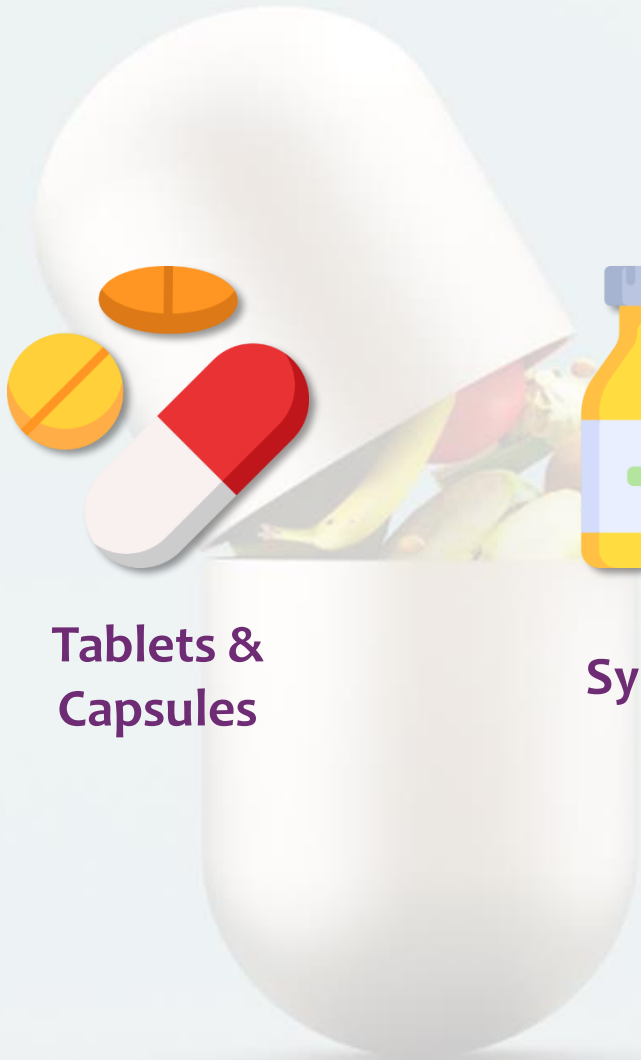


ORTHOPAEDICS



UROLOGY

Dosage Forms We Catered



Tablets & Capsules



Syrup



Powder & Granules

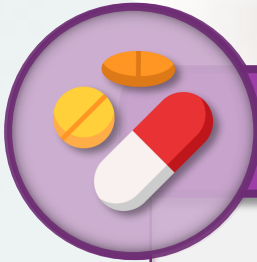


Soft Gel



Sachets

Our Manufacturing Capacity



Capsules



1.5 Lakhs



45 Millions



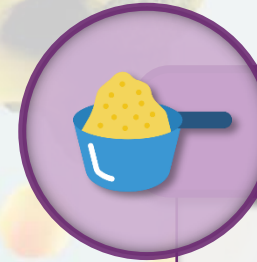
Powder



1 Ton



300 Tons



Granules



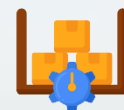
1 Ton



300 Tons



Per Shift



Annual Output

Our Promise



**Cost Effective
Production**



**Best Quality
Products**



Timely Delivery



**Customized
Quantity & Packaging**



**Professional
Experience**

Our Masterminds



Mr. Om Singh
Managing Director
B. Pharma



Mrs. Priyanka Singh
Director
B. Pharma | MBA – Clinical Research



Mr. Rajesh Singh
QA Officer
M. Pharma – Pharmaceuticals



: www.smlifescience.com

: info@smlifescience.com

: smlifescience22@gmail.com

: +91-9892606010